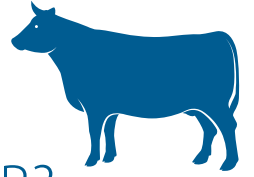


Bovine Tuberculosis in Wildlife

What is bovine tuberculosis?

Bovine tuberculosis – or bovine TB – is a contagious chronic bacterial infection. It primarily affects domestic cattle.



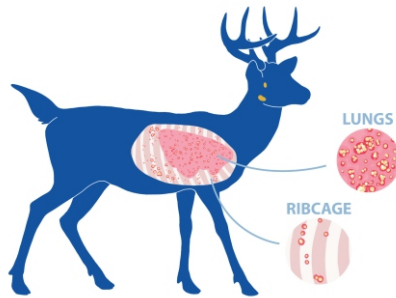
Can deer and other wildlife contract bovine TB?

It is rare, but bovine TB can spread to wild animals such as bison, elk, moose and deer.

Bovine TB has not been detected in wildlife in Saskatchewan.

How can I tell if a wild animal has bovine TB?

An animal infected with bovine TB may have lesions in their lungs, rib cage or chest cavity that hunters will notice when field dressing the animal. The lesions can vary in size and texture, and will be white, tan or yellow in colour. An infected animal may also have enlarged lymph nodes.



Reporting bovine TB



If you find bovine TB-like lesions, take a photo if possible and contact the Ministry of Environment at **1-800-567-4224** or the Canadian Wildlife Health Cooperative at **306-966-5815**.

How can I test game animals?

Hunters harvesting elk, mule deer, or white-tailed deer on regular season or draw licenses in WMZ 37 and 39 in 2025-26 are asked to submit heads for mandatory bovine TB testing to ensure Saskatchewan's wildlife populations are bovine TB-free. Submission of moose remains voluntary. The process to submit a head is the same as for chronic wasting disease (CWD). For more information and to view a list of drop-off locations, please visit saskatchewan.ca/bovinetb.



Use safe field dressing practices

Hunters should always use routine hygiene precautions when field dressing wild game to prevent transmission of bovine TB or other diseases.

- **Avoid direct contact** with blood, feces and respiratory secretions of all wild game.
- **Wash your hands, your knives and other equipment regularly** – use soap and warm water, followed up with a 10 per cent solution of household bleach.
- **Don't rub your eyes**, eat, drink or smoke while cleaning game.
- **Wear dish gloves** or latex/plastic gloves when handling and processing game.
- **Work in a well-ventilated area.** If that isn't possible, wearing a mask will reduce your exposure to aerosols.
- **Cook meat thoroughly.**



Help support our wildlife health program.
Test your game animal for bovine tuberculosis.