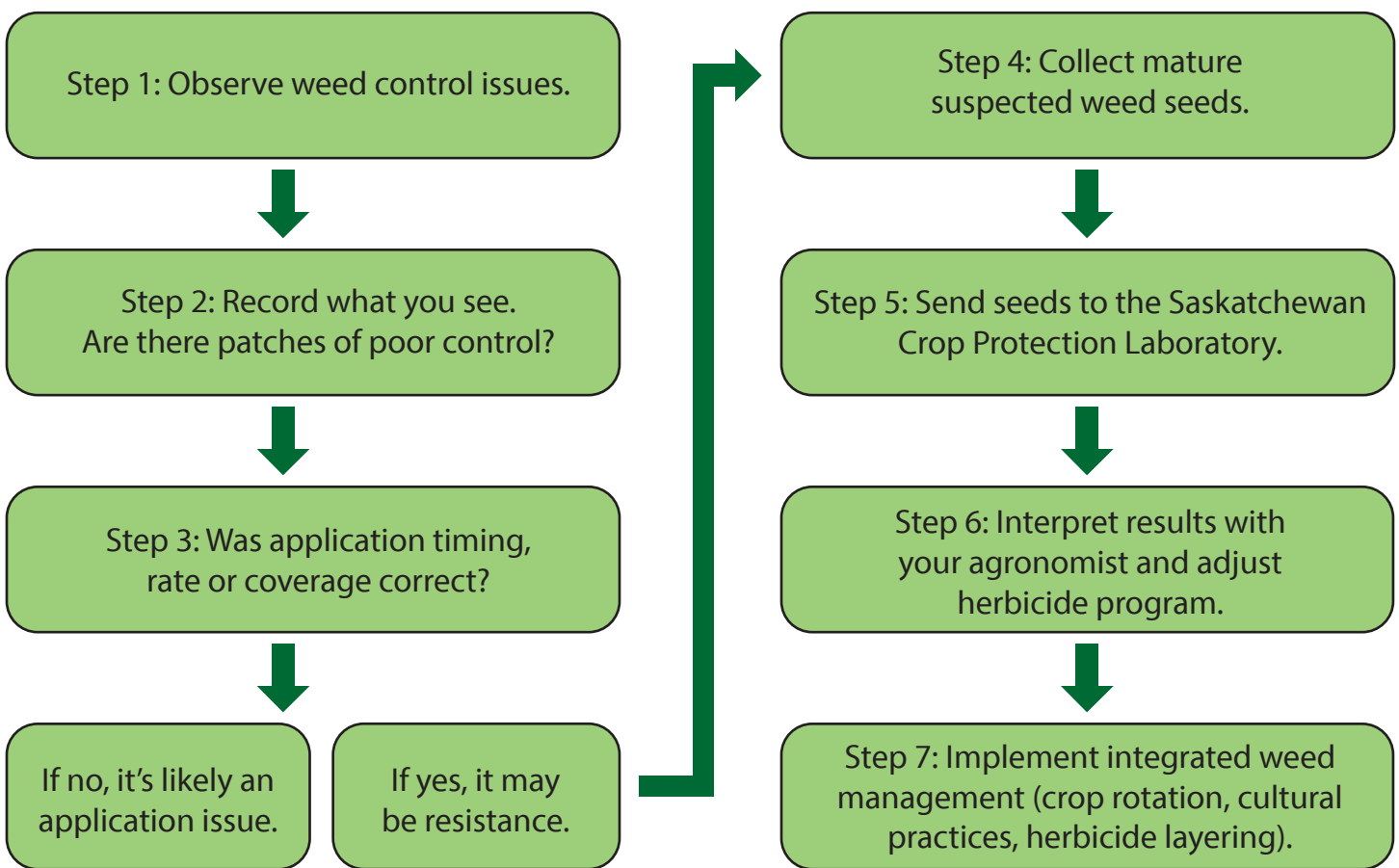


Herbicide Resistance Testing

Identifying herbicide-resistant weeds is important for determining the most cost-effective way to reduce their impact on crops. The best way to confirm a weed is resistant to a herbicide group is to submit a sample of seeds from that weed for testing.

This quick, step-by-step guide will help you detect and manage herbicide-resistant weeds in your field. It walks you through each step from identifying suspicious weed patches to confirming resistance through laboratory testing so you can make informed management decisions and protect herbicide performance on your operation.



To learn more about herbicide resistance testing and how it can benefit your operation, scan the QR code or call the Agriculture Knowledge Centre at 1-877-457-2377.

