



2018 Woodland Caribou Conservation Program Update

Range Planning

The main purpose of a range plan is to outline how range-specific land and/or resource activities will be managed to ensure that critical habitat for boreal caribou is protected. Range plans in Saskatchewan are being prepared for the SK1 and SK2 woodland caribou ranges (figure 1).

The SK2 range is divided into three caribou administrative units – SK2 central, west and east (figure 2) and a range plan will be prepared for each.

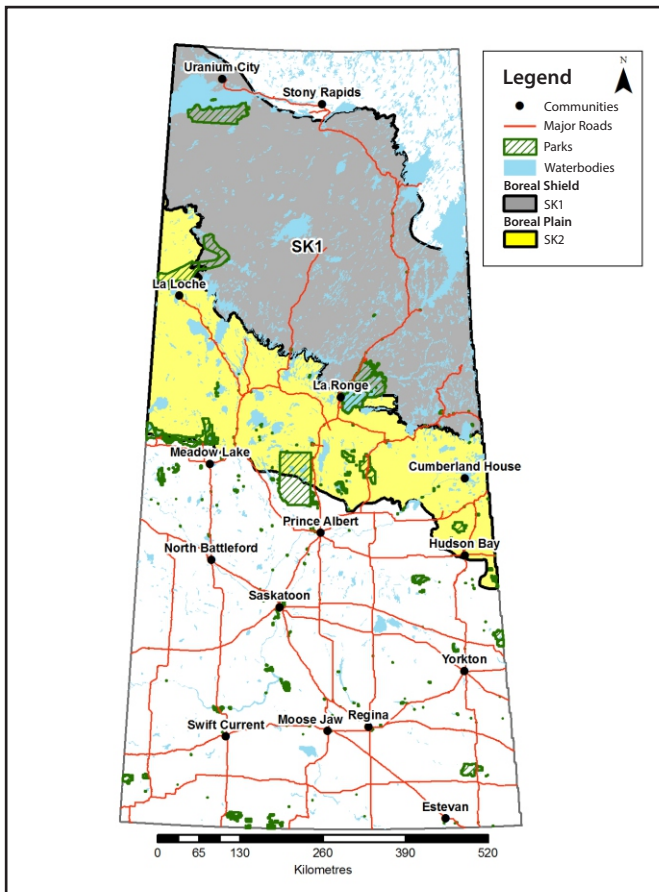


Figure 1: The SK1 and SK2 caribou conservation units

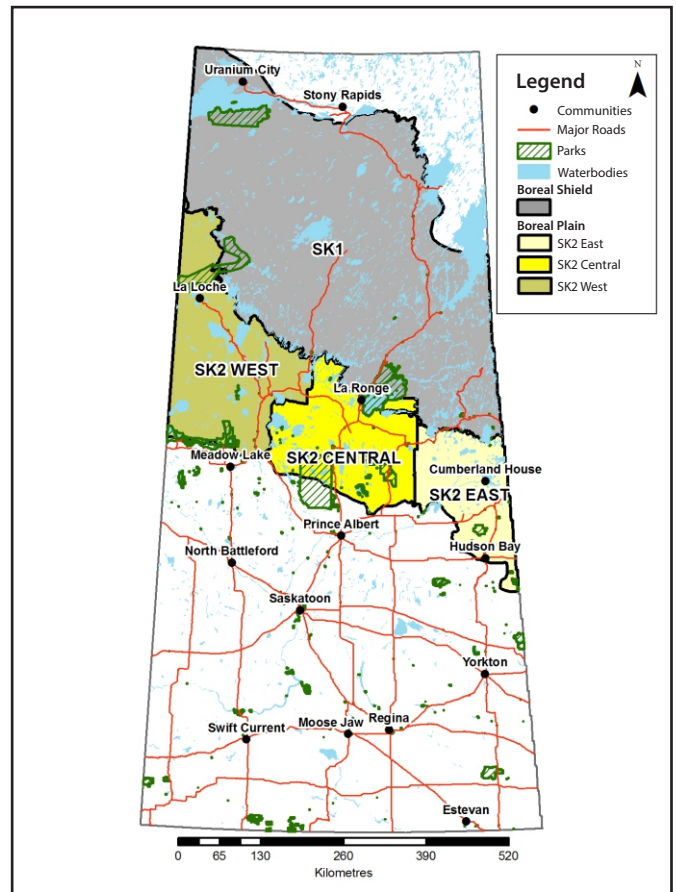


Figure 2: The three SK2 caribou administrative units

SK2 Central Range Plan

- The draft SK2 central range plan is available at <http://www.publications.gov.sk.ca/details.cfm?p=87703>.
- The final plan is scheduled for release in 2019.
- Caribou pellet collection has begun for the population assessment and will be completed in March 2019.
- Caribou habitat management areas (CHMAs) for SK2 Central are available through the HABISask website once users have obtained a user name and password from www.biodiversity.sk.ca/HABISask.htm.

SK2 West Range Plan

- Habitat disturbance analysis for the planning area is being conducted.
- The next meeting for the SK2 West planning table is scheduled for May 7, 2019. Members will be notified once the location and time are confirmed.
- Public review of the draft plan will occur following completion of the draft.
- CHMAs for SK2 West are also available through HABISask. Users can obtain a user name and password from www.biodiversity.sk.ca/HABISask.htm.

SK2 East Range Plan

- CHMAs are scheduled to be defined in February 2019.
- The first meeting of the SK2 East planning table is to occur in June 2019. Members will be notified once the date and location are determined.

SK1 Range Plan

- Range planning will commence in 2020.

Other Updates

- Caribou pellet collections will occur in February and March 2019 in the southern part of SK1. Based on genetic analysis, this information will help determine if caribou in Saskatchewan are part of one continuous population or smaller sub-populations.
- Samples from previous studies in SK1 included only females, while the current pellet collections will include both sexes. This will provide a more complete picture of caribou population structure.
- Woodland caribou sighting information will soon be added to the Saskatchewan Co-operative Wildlife Management Survey app.

- Environment and Climate Change Canada and the Saskatchewan Ministry of Environment have drafted a *Species at Risk Act* section 11 conservation agreement-in-principle. The draft agreement can be found at https://wildlifespecies.canada.ca/species-risk-registry/document/default_e.cfm?documentID=3384.
- Saskatchewan is currently reviewing proposed changes to *The Crown Resource Land Regulations*. These regulations govern the administration of Crown land in the northern part of the province, including all boreal caribou habitat. Administrative tools will be examined that could hasten or enhance the protection of boreal caribou habitat.
- Saskatchewan has taken steps toward designation of additional protected areas within the boreal caribou ranges. The Lower Foster Lake representative area within SK1, with an area of 23,152 hectares, was gazetted in June 2018, while other areas are also being assessed for suitability.

Helpful links

- Report a woodland caribou sighting website: <http://biodiversity.sk.ca/ReportaCaribou.php>
- Woodland caribou project e-mail: woodlandcaribouproject@gov.sk.ca
- Saskatchewan Co-operative Wildlife Management Survey app:
 - ~ For ios: <https://itunes.apple.com/ca/app/saskatchewan-wildlife-survey/id1290254370?mt=8>
 - ~ For android: <https://play.google.com/store/apps/details?id=ca.sk.gov.skcwms>
 - ~ Call 1-800-567-4224 toll-free, for your app participant number and activation code.

Please report woodland caribou sightings

The Ministry of Environment and the Saskatchewan Conservation Data Centre are collecting information to identify the distribution of woodland caribou in the province. Report a woodland caribou sighting [online](#).

¹ Environment and Climate Change Canada. 2016. Range Plan Guidance for Woodland Caribou, Boreal population. Species at Risk Act: Policies and Guidelines Series. Environment and Climate Change Canada. Ottawa, ON. 26 pp.

² Planning tables are composed of regionally specific First Nations and Métis communities, industry, environmental non-governmental organizations, stakeholders, and other identified groups with an interest and or responsibility for the activities in the planning area.