

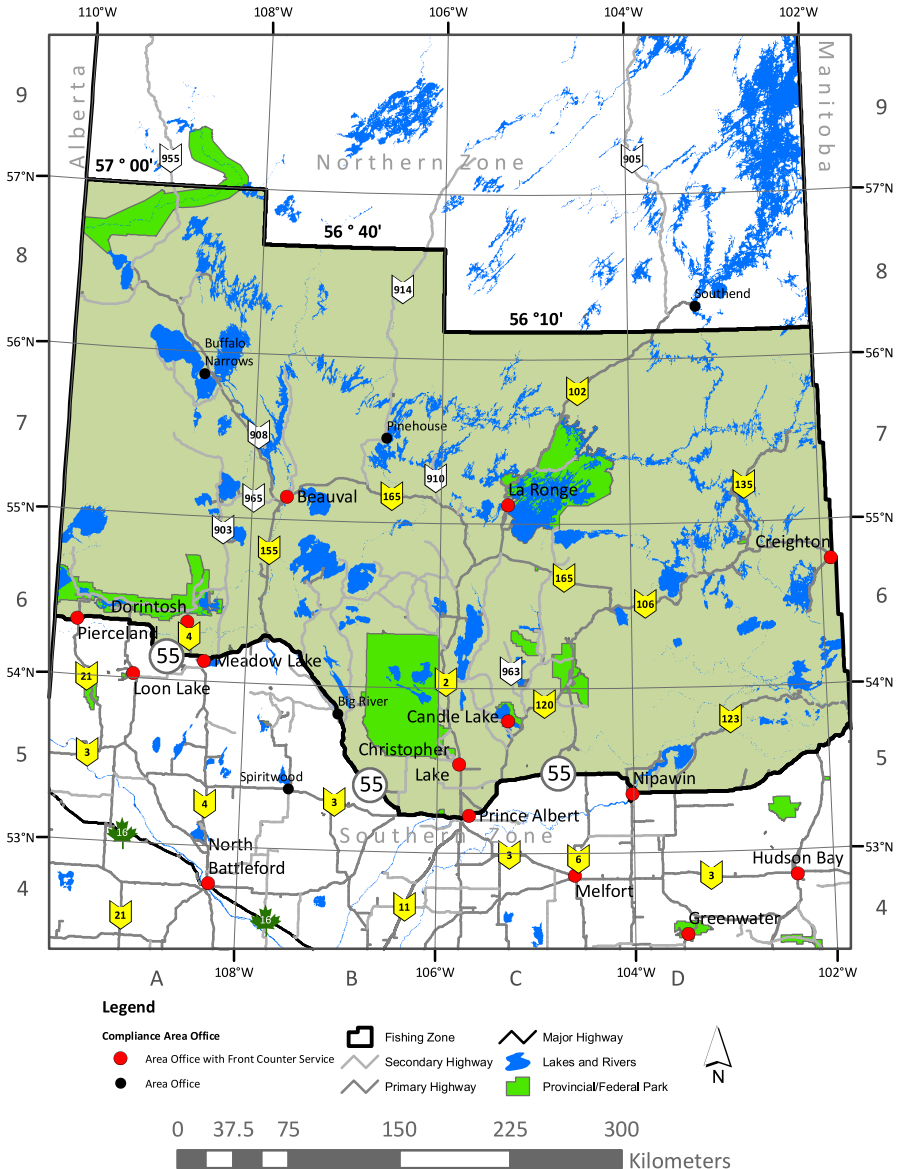
Central zone - special regulations



2024-25 season dates: May 15, 2024 to March 31, 2025

See page 10 for catch-and-release (CR) water species limits.

Contact your local ministry office or the Inquiry Centre at 1-800-567-4224 for clarification of all regulations.



Central zone

Indicates CR water

Indicates stocked trout water - open all year

Please note: all dates are inclusive.

| Water | Map | Special regulation | Water | Map | Special regulation |
|--------------------------|-----|---|--|-----|---|
| Amisk Lake | 6D | See Sturgeon Weir River | Ballantyne River <i>(continued)</i> | 6D | and 1 km east of the river mouth and then south to the shore closed to all fishing March 1 to June 15 |
| Atchison Lake | 6A | Stocked trout; open all year | Baptiste Lake | 8B | (56°11' 106°25') CR3 limits |
| Athapapuskow Lake | 6D | Walleye/sauger limit 4 (combined), none may exceed 55 cm; pike limit 4, none may exceed 75 cm; lake trout limit 1, none may exceed 65 cm; Saskatchewan or Manitoba angling licence is valid on the Saskatchewan part of the lake; mandatory barbless hooks | Barker Lake (includes Devil, McNichol, Otter) | 7C | Walleye limit 2, only 1 over 55 cm; pike limit 3, only 1 over 75 cm |
| | | | Beatty Lake | 6B | Stocked trout; open all year |
| | | | Berna Lake | 7C | Stocked trout; open all year |
| Attree Lake | 6D | See Sturgeon Weir River | Besnard Lake | 7B | 200 m on each side of the narrows bridge and all of Mercer Bay closed to angling all year |
| Bad Carrot Lake | 6D | Bad Carrot Lake and River and part of Bertrum Bay of Hanson Lake within 1 km of Bad Carrot River mouth closed to angling March 1 to May 31 | Big Sandy Lake | 6C | Walleye limit 1 |
| | | | Bittern Lake | 5C | Walleye limit 3, only 1 over 55 cm |
| | | | Blair Lake | 8C | (56°08' 104°26') CR1 limits |
| Ballantyne Bay | 6D | All waters of Ballantyne Bay of Deschambault Lake lying south of a straight line joining a jut of land on the east shore of the bay at 54°34'24" 103°33'43" to the most southeast point on Williams Island and a point of land on the west shore of the bay at 54°34'24" 103°37'4" closed to all fishing March 1 to June 15 | Broad Creek | 6A | See Keeley Lake |
| | | | Burtlein Lake | 6C | Stocked trout; open all year; boat motors over 5 hp prohibited |
| Ballantyne River | 6D | River and part of Ballantyne Bay of Deschambault Lake extending approximately 1.5 km north...(cont) | Caddis Lake | 6C | Stocked trout limit 3, only 1 over 43 cm; open all year |
| | | | Camp Ten Lake | 6B | Stocked trout; open all year |
| | | | Candle Lake | 5C | Walleye limit 3, only 1 over 50 cm (see Fisher creek) |
| | | | Canoe Lake | 7A | Walleye limit 1; closed to angling March 1 to May 14, except Jans Bay, Wepooskow Bay and Narrows are closed to all fishing all year |
| | | | Caribou Creek | 6C | From Upper to Lower Fishing Lake closed to angling April 1 to May 31 |

New regulations for a specific waterbody marked in red with an asterisk (*).

Indicates CR water

Indicates stocked trout water - open all year

Please note: all dates are inclusive.

| Water | Map | Special Regulation | Water | Map | Special Regulation |
|-------------------|-----|---|---|-----|--|
| Carl Creek | 6A | Walleye limit 3, only 1 over 55 cm | Deschambault Lake | 6D | See Ballantyne Bay, Ballantyne, Oskikebuk Puskwakau rivers and Fisher and Palf creeks |
| Chachukew Lake | 7D | Medicine Rapids closed to all fishing March 1 to May 31 | Devil Lake (includes Barker, McNichol, Otter) | 7C | Walleye limit 2, only 1 over 55 cm; pike limit 3, only 1 over 75 cm |
| Chopper Lake | 6C | Closed to all fishing all year | Diamond Lake | 6C | Stocked trout; open all year; electric boat motors only |
| Churchill Lake | 7A | Walleye limit 3, only 1 over 55 cm | Dillon River | 7A | Walleye limit 3, only 1 over 55 cm |
| Churchill River | 7C | See Barker, Devil, McNichol and Otter Lakes – aggregate limit | Dingwall Lake | 7C | (55°29' 104°36') CR3 limits |
| *Cold Lake | 6A | Walleye limit 3, none may be less than 50 cm; pike limit 1, which must be over 63 cm; lake trout limit 1, which must be between 65 – 70 cm; lake trout limit 0 from September 15 to November 15; whitefish limit 10; perch limit 15; use or possession of any gaff prohibited; Saskatchewan or Alberta angling licences are valid | Dog Lake | 6B | Stocked trout; open all year |
| Cold River | 6A | Between Cold and Pierce Lakes walleye limit 3, only 1 over 55 cm; lake trout limit 1, which must be over 75 cm; closed to angling September 15 to November 15 | Dore Lake | 6B | Walleye limit 1, which must be 55 cm or greater; all waters of Bazill Bay (54°42' 107°32') lying south of a straight line joining a point of land on the west bank of Bazill Bay at 54°44'32" 107°33'10" to the northern tip of Smith Island in Bazill Bay and the northern tip of a point of land on the east bank of Bazill Bay at 54°43'42" 107°27'14" closed to angling all year |
| Cora Lake | 6C | Stocked trout; open all year | Dorothy Lake | 6C | Stocked trout; closed April 1 to May 14 |
| Corneille Lake | 6D | Carter Bay west of 102°41'21" closed to all fishing March 1 to May 31 | Douglas Lake | 6D | Boat motors prohibited |
| Cub Creek | 6C | From Dupueis Lake to Little Bear Lake closed to angling April 1 to May 31 | Downton Lake | 7C | Stocked trout; open all year |
| De Balinhard Lake | 6A | Walleye limit 3, only 1 over 55 cm | Dunajski Lake | 7C | (55°00' 104°37') CR3 limits |
| Delaronde Lake | 6B | Walleye limit 3, only 1 over 55 cm | East Trout Lake | 6C | Lake trout limit 2, only 1 over 65 cm; lake trout limit 0 from September 10 to November 10; pike limit 4, only 1 over 75 cm |

New regulations for a specific waterbody marked in red with an asterisk (*).

Central zone

Indicates CR water Indicates stocked trout water - open all year Please note: all dates are inclusive.

| Water | Map | Special regulation | Water | Map | Special regulation |
|--------------------|-----|---|----------------------------|-----|--|
| Easterby Lake | 7C | (55°34' 105°28') CR3 limits | Head Lake | 7C | (55°16' 105°34') CR1 limits |
| Eldridge Lake | 7D | (55°12' 103°57') CR1 limits | Hildred Lake | 6A | Walleye limit 3, only 1 over 55 cm |
| Emmeline Lake | 7B | (55°00' 106°22') CR3 limits | Hirtz Lake | 6A | Walleye limit 3, only 1 over 55 cm |
| Eyahpaise Lake | 7D | (55°35' 105°35') CR3 limits | Houlding Lake | 7C | (55°04' 104°04') CR3 limits |
| Feldspar Lake | 7C | Stocked trout; open all year | Humphrey Lake | 6A | Walleye limit 3, only 1 over 55 cm |
| Fern Lake | 6A | Stocked trout limit 3, only 1 over 43 cm; open all year. | Iskwatam Lake | 7D | Southwest bay of Iskwatam Lake at 55°33'30" 103°08'30", including small river entering from Pow Lake, closed to all fishing March 1 to May 31 |
| Fifth Lake | 6A | Walleye limit 3, only 1 over 55 cm | Iskwatikan Lake | 7C | CR1 limits |
| First Mustus Lake | 6A | Walleye limit 3, only 1 over 55 cm | Jackson Lake | 7C | (55°28' 105°38') CR3 limits |
| Fisher Creek | 5C | Walleye limit 3, only 1 over 50 cm; creek and part of Candle Lake near creek mouth closed to angling March 15 to May 14; boat motors prohibited between Candle Lake and Highway 265 | Jade Lake (Big and Little) | 6C | Stocked trout; open all year; electric boat motors only |
| Fisher Creek | 6D | Creek and all of Fisher Bay east of 103°29' on Deschambault Lake closed to all fishing March 1 to June 15 | Jan Lake | 6D | Unnamed long narrow bay on the northeast shore of the main part of Jan Lake, northeast of Busted Island, at 54°58' 102°52'45" closed to all fishing March 1 to May 31; Brock Bay and water surrounding Harper Island from point west of Harper Island at 54°52'51" 103°0'46" to the northern most tip of Harper Island at 54°53'1" 103°0'12" to the point southeast of Harper Island at 54°52'4" 102°59'29" closed to angling March 1 to June 15 |
| Flotten Lake | 6A | Walleye limit 3, only 1 over 55 cm | Jean Lake | 8B | (56°11' 106°28') CR3 limits |
| Flotten River | 6A | Walleye limit 3, only 1 over 55 cm | Jeannette Lake | 6A | Walleye limit 3, only 1 over 55 cm |
| Fourth Mustus Lake | 6A | Walleye limit 3, only 1 over 55 cm | Jet Lake | 6B | Stocked trout; open all year |
| Frobisher Lake | 8A | Including Simonds Channel, Walleye limit 3, only 1 over 55 cm | | | |
| George Lake | 8B | (56°14' 106°20') CR1 limits | | | |
| Gordon Lake | 7B | (55°50' 106°28') CR2 limits | | | |
| Greig Lake | 6A | Walleye limit 3, only 1 over 55 cm | | | |
| Gross Lake | 7C | (55°29' 104°36') CR3 limits | | | |
| Hackett Lake | 6B | Walleye limit 3, only 1 over 55 cm | | | |
| Hanson Lake | 6D | See Bad Carrot Lake | | | |

New regulations for a specific waterbody marked in red with an asterisk (*).

Indicates CR water

Indicates stocked trout water - open all year

Please note: all dates are inclusive.

| Water | Map | Special Regulation | Water | Map | Special Regulation |
|---|-----|--|--|-----|---|
| Johannsen Lake | 7D | (55°38' 103°47') CR3 limits | Matheson Lake | 6A | Walleye limit 3, only 1 over 55 cm |
| Johnston Lake | 6A | Walleye limit 3, only 1 over 55 cm | McCall Lake | 7D | (55°09' 102°23') CR3 limits |
| Junction Lake | 6C | Stocked trout; open all year | McCulloch Lake | 7D | (55°34' 103°41') CR3 limits |
| Keeley Lake (including Broad Creek to Hwy 903) | 6A | Walleye limit 2, only 1 over 55 cm; pike limit 3, only 1 over 75 cm | McCusker River | 7A | Closed to all fishing March 1 to June 30 |
| Keeley River | 7A | Between Jans Bay of Canoe Lake and 55°N closed to all fishing all year | McEwen Lake | 8C | (56°09' 104°51') CR1 limits |
| Kimball Lake | 6A | Walleye limit 3, only 1 over 55 cm | McNichol Lake (includes Barker, Devil, Otter) | 7C | Walleye limit 2, only 1 over 55 cm; pike limit 3, only 1 over 75 cm |
| Kit Lake | 6C | Stocked trout; open all year | McRobbie Lake | 6E | Stocked trout; open all year |
| Konuto Lake | 6D | CR1 limits; closed to all fishing April 1 to June 30 | Mekawap Lake | 7C | Stocked trout; open all year |
| Lac des Iles | 6A | Walleye limit 3, only 1 over 55 cm | Meadow Lake | 6A | Reduced walleye / lake trout limits; see tables for specific waters |
| Lac la Ronge | 7C | CR1 limits; mandatory barbless hooks; see Montreal / Potato rivers | Mercer River | 7B | Mercer Lake to Besnard Lake including Mercer Bay of Besnard Lake closed to angling all year |
| Lac Ile a la Crosse | 7B | Walleye limit 3, only 1 over 55 cm | Merritt Lake | 6D | See Oskikebuk River |
| Land Lake | 7C | (55°25' 104°42') CR3 limits | Mid Lake | 6D | Stocked trout; open all year |
| Lepine Lake | 6A | Walleye limit 3, only 1 over 55 cm | Mistohay Creek | 6A | Walleye limit 3, only 1 over 55 cm |
| Lepp Lake | 7D | (55°13' 103°58') CR1 limits | Mistohay Lake | 6A | Walleye limit 3, only 1 over 55 cm |
| Lewis Lake | 8C | (56°09' 104°55') CR3 limits | Mitchell Lake | 7C | (55°04' 104°21') CR3 limits |
| Little Lake | 6A | Walleye limit 3, only 1 over 55 cm | Moise Lake | 7D | Stocked trout; open all year |
| Little Bear Lake | 6C | Lake trout limit 2, only 1 over 65 cm; lake trout limit 0 from September 10 to November 10 | Montreal Lake | 6C | Walleye limit 1 |
| Little Raspberry Lake | 6A | Stocked trout limit 3, only 1 over 43 cm; open all year | Montreal River | 7C | Highway 2 bridge centerline to Lac la Ronge and part of Lac la Ronge closed to angling all year |
| Lussier Lake | 7C | Stocked trout; open all year | Mountain Lake | 7C | See Twin Falls |
| Mackie Lake | 5C | Stocked trout; open all year; boat motors over 5 hp prohibited | Mullock Lake | 7C | Stocked trout; open all year |
| | | | Musker Pond | 5C | Stocked trout limit 2; open all year; boat motors prohibited |

New regulations for a specific waterbody marked in red with an asterisk (*).

Central zone

Indicates CR water

Indicates stocked trout water - open all year

Please note: all dates are inclusive.

| Water | Map | Special regulation | Water | Map | Special regulation |
|---|-----|--|----------------------------------|-----|---|
| Muskike Lake | 7D | Closed to all fishing March 1 to May 31 | Palf Creek | 6D | Deschambault Lake extending 1 km south and 2 km west of narrows closed to all fishing March 1 to June 15 |
| Negan Lake | 7D | Stocked trout; open all year | (continued) | | |
| Nemeiben Creek | 7C | (55°18.2' 105°12.2') CR1 limits | Park Lake | 7D | (55°07' 103°49') CR3 limits |
| *Nemeiben Lake (including Head Lake) | 7C | CR1 limits. Limit is inclusive of fish caught on both lakes. | Paull Lake | 8C | (56°08' 104°48') CR3 limits |
| Nesootao Lake (Twin) | 6A | Walleye limit 3, only 1 over 55 cm | Pear Lake | 5C | Stocked trout; open all year |
| Nipawin Lake | 5C | Stocked trout limit 3, only 1 over 43 cm; open all year; boat motors over 5 hp prohibited | Peitahigan Lake | 6A | Walleye limit 3, only 1 over 55 cm |
| Nipekamew Lake | 6C | Pike limit 4, only 1 over 75 cm | Peltier Lake | 7D | (55°34' 105°04') CR3 limits |
| Nisbet Pond | 5C | Stocked trout limit 2; open all year; boat motors prohibited | Peter Pond Lake (Big and Little) | 7A | Walleye limit 3, only 1 over 55 cm; narrows from Fleury Point to Sandy Point, including Vee Bay, Kisis Channel from Peter Pond Lake to Churchill Lake and southern part of Peter Pond Lake adjacent to Niska Channel closed to all fishing March 1 to June 30 |
| Niska Lake & Channel | 7A | Closed to all fishing March 1 to June 30 | | | |
| Nistum Lake | 6D | Stocked trout; open all year | *Pierce Lake | 6A | Walleye limit 3, only 1 over 55 cm; lake trout limit 1, which must be between 65 – 70 cm |
| Niven Lake | 6A | Walleye limit 3, only 1 over 55 cm | Pilling Lake | 7D | (55°36' 103°44') CR3 limits |
| Nunn Lake | 7C | (55°16' 105°34') CR1 limits | Pine Lake | 6C | Stocked trout; open all year; boat motors over 5 hp prohibited |
| Opal Lake | 6C | Stocked trout; open all year; electric boat motors only | | | |
| Oskikebuk River | 6D | From south bay of Oskikebuk Lake to narrows in west arm of Deschambault Lake at 103°42', including Merritt Lake, closed to all fishing March 1 to June 15 | Pinehouse Lake | 7B | All waters of an unnamed bay lying south of a straight line from a point of land at 55°21'28" 106°44'05" to the northwest point of an island at 55°21'10" 106°42'00" and from the southern tip of that island to a point of land at 55°20'24'...(next page) |
| Otter Creek | 6A | Walleye limit 3, only 1 over 55 cm | | | |
| Otter Lake (includes Barker, Devil, McNichol) | 7C | Walleye limit 2, only 1 over 55 cm; pike limit 3, only 1 over 75 cm; Rattler Bay of Otter Lake and Stewart River south of Ducker Lake closed to angling April 1 to June 15 | | | |
| Palf Creek | 6D | Creek and Hidden Bay of...(cont) | | | |

New regulations for a specific waterbody marked in red with an asterisk (*).

Indicates CR water

Indicates stocked trout water - open all year

Please note: all dates are inclusive.

| Water | Map | Special regulation | Water | Map | Special regulation |
|---|-----|---|----------------------------|-----|---|
| Pinehouse Lake <i>(continued)</i> | 7B | including the Massinahigan River from Pinehouse Lake to 1 km west of the Highway 914 bridge and the Tippo River from the confluence of the Massinahigan River to 55°18'50" 106°43'40" closed to angling April 1 to May 31 | Rush Lake | 6A | Walleye limit 3, only 1 over 55 cm |
| | | | Rusty Creek | 6A | Walleye limit 3, only 1 over 55 cm |
| | | | Rusty Lake | 6A | Walleye limit 3, only 1 over 55 cm |
| | | | Sapphire Lake | 6C | Stocked trout; open all year; electric boat motors only |
| | | | Sand Lake | 6C | Stocked trout; open all year |
| | | | Sandy Lake | 7B | Stocked trout; open all year |
| Piprell Lake | 6C | Stocked trout; open all year | Sealey Lake | 6C | Stocked trout; open all year |
| Pointer Lake | 7D | (55°38' 103°45') CR3 limits | Second Mustus Lake | 6A | Walleye limit 3, only 1 over 55 cm |
| Potato Lake | 6C | Including Lower Potato Lake, closed to angling April 1 to May 31 | Sedge Lake | 6B | Stocked trout; open all year |
| | | | Sergeant Lake | 6A | Walleye limit 3, only 1 over 55 cm |
| Potato River | 7C | All waters of the Potato River closed to angling April 1 to May 31, except river section east of 105°15'50" and part of Lac La Ronge within 1 km of river mouth closed to angling all year | Shannon Lake | 6C | Stocked trout; open all year |
| | | | Shirley Lake | 6B | Stocked trout; open all year |
| | | | Singh Lake | 6C | Stocked trout; open all year |
| | | | Smoothstone Lake | 6B | Walleye limit 1 |
| Pow Lake | 7D | Closed to all fishing March 1 to May 31 | Smoothstone River | 7B | River section from 55°18'30" 106°37'30" to Pinehouse Lake and part of Pinehouse Lake within a 2 km radius of the Smoothstone River mouth closed to angling April 1 to June 20 |
| Primrose Lake | 6A | Closed to angling all year | | | |
| Propp Lake | 7C | (55°42' 104°09') CR3 limits | Snell Lake | 6B | Stocked trout; open all year |
| Puskwakau River | 6D | All waters of the Puskwakau River closed to all fishing March 1 to June 15 (see Ballantyne Bay) | Stanley Lake | 6A | Walleye limit 3, only 1 over 55 cm |
| Ranger Lake | 5C | Stocked trout; open all year | Stapleford Lake | 7C | (55°31' 105°08') CR3 limits |
| Redmond Lake | 6A | Walleye limit 3, only 1 over 55 cm | Stewart Lake | 7C | (55°34' 105°33') CR3 limits |
| Ridge Lake | 6C | Stocked trout; open all year | Stewart River | 7C | See Otter Lake |
| Road Lake | 6C | Stocked trout; open all year | Stratton Lake | 7C | (55°31' 105°05') CR3 limits |
| Round Lake (53°20' 106°02') | 5B | Perch limit 25, only 10 may exceed 25 cm | Sturgeon Weir River | 6D | South of Highway 106,(next page) |

New regulations for a specific waterbody marked in red with an asterisk (*).

Central zone

Indicates CR water

Indicates stocked trout water - open all year

Please note: all dates are inclusive.

| Water | Map | Special regulation | Water | Map | Special regulation |
|--|-----|--|------------------------------------|-----|--|
| Sturgeon Weir River <i>(continued)</i> | 6D | including Attree Lake and part of Amisk Lake near river mouth, closed to angling October 1 to May 31 | Unnamed Lake (Luttge) | 7C | (55°32' 105°30') CR3 limits. |
| | | | Unnamed Lake (Leuzinger) | 7C | (55°32' 105°30') CR3 limits |
| Swanson Lake | 8B | (56°10' 106°20') CR3 limits | Unnamed Lake (Nice) | 6A | (54°33' 108°35') walleye limit 3, only 1 over 55 cm |
| Tatukose Creek | 6A | Walleye limit 3, only 1 over 55 cm | Unnamed Lake (Two Williams) | 7C | (55°28' 105°13') CR3 limits |
| Ted's Lake | 6B | Stocked trout; open all year | Unnamed Lake (Vermont) | 7C | (55°27' 105°32') CR3 limits |
| Terra Lake | 6B | Stocked trout; open all year | Unnamed Lake (Wildgoose) | 6C | (55°29' 105°25') CR3 limits |
| Third Mustus Lake | 6A | Walleye limit 3, only 1 over 55 cm | Unnamed Lake (Wood Duck) | 6C | (55°30' 105°28') CR3 limits |
| Tobin Lake | 5D | E.B. Campbell Dam to Francois Finley Dam, including the Petaigan River: walleye/sauger limit 3 (combined), only 1 over 86 cm, none may be between 55-86 cm; pike limit 4, only 1 over 115 cm, none may be between 75-115 cm; mandatory barbless hooks; closed to angling April 1 to May 14 | Unnamed Lake (Woody) | 6C | (55°25' 105°28') CR3 limits |
| | | | Unnamed Lake | 6A | (54°27' 108°35') walleye limit 3, only 1 over 55 cm |
| Torch Lake | 5C | Walleye limit 3; only 1 over 50 cm; closed to angling April 1 to June 15 | Unnamed Lake | 6A | (54°28' 108°39') walleye limit 3, only 1 over 55 cm |
| Turvey Lake | 6A | Walleye limit 3, only 1 over 55 cm | Unnamed Lake | 7D | (55°08' 102°23') CR3 limits |
| Twin Falls | 7C | From the westerly tip of the island upstream and the bay located downstream of Twin Falls to the southwest tip of Eyinew Island, including Early Bay, closed to angling April 1 to June 15 | Unnamed Lake | 7D | (55°10' 102°21') CR3 limits |
| | | | Unnamed Lake | 7D | (55°13'54" 103°03'48") closed to angling April 1 to May 31 |
| | | | Unnamed Lake | 7D | (55°13'57" 103°04'03") closed to angling April 1 to May 31 |
| | | | Unnamed Lake | 7D | (55°19'30" 102°35') CR3 limits |
| Unnamed Lake (Eva) | 7C | (55°31' 105°31') CR3 limits | Unnamed Lake | 7C | (55°46' 105°26') CR3 limits |
| Unnamed Lake (Heika) | 7C | (55°32' 105°29') CR3 limits | Unnamed Lake | 7C | (55°46' 105°34') CR3 limits |

New regulations for a specific waterbody marked in red with an asterisk (*).

Indicates CR water

Indicates stocked trout water - open all year

Please note: all dates are inclusive.

| Water | Map | Special regulation | Water | Map | Special regulation |
|----------------|-----|--|-----------------|-----|--|
| Unnamed Lake | 7B | (56°11' 106°21') CR3 limits | Waterhen Lake | 6A | Walleye limit 3, only 1 over 55 cm |
| Vivian Lake | 6A | Stocked trout; open all year | Waterhen River | 6A | Walleye limit 3, only 1 over 55 cm; lake trout limit 2, only 1 over 65 cm |
| Wapawekka Lake | 6C | Walleye limit 2, only 1 over 55 cm, all creeks and associated lakes flowing into Horn Bay (54°55' 104°07') of Wapawekka Lake and Horn Bay from 54°55'26" east to the western tip of an island at 54°55'27" 104°7'13" and from the eastern tip of that island south to the mainland at 54°55'17" 104°06'56" and the creek that flows into Radar Bay (54°56' 104°24') of Wapawekka Lake and the portion of Radar Bay east of 104°20'25" closed to angling March 1 to June 15 | Wells Lake | 7C | (55°33' 105°37') CR3 limits |
| | | | Weyakwin Lake | 6C | Walleye limit 3, only 1 over 55 cm |
| | | | Whiteswan Lakes | 6C | Lake trout limit 1; Whelan Bay closed to angling September 10 to November 10 |
| | | | Wood Lake | 7D | Including Grassy Narrows closed to all fishing March 1 to May 31 |
| | | | Wye Lake | 6A | Walleye limit 3, only 1 over 55 cm |
| | | | Wykes Lake | 7D | (55°32' 103°33') CR3 limits |
| | | | Zander Lake | 8A | (56°39' 108°05') CR3 limits |

New regulations for a specific waterbody marked in red with an asterisk (*).

Ice thickness guidelines

Any activity on ice comes with a risk. Test the ice thickness and follow these guidelines to determine if it is safe to proceed.



4" (10 cm)
one person



8" (20 cm)
snowmobile



12" (30 cm)
automobile
(approx. 2000 kg)



12" + (>30 cm)
heavy truck

Please remember these are guidelines only. Ice conditions often change rapidly and can present serious safety risks. Visit saskatchewan.ca/fishing for more information on ice safety.