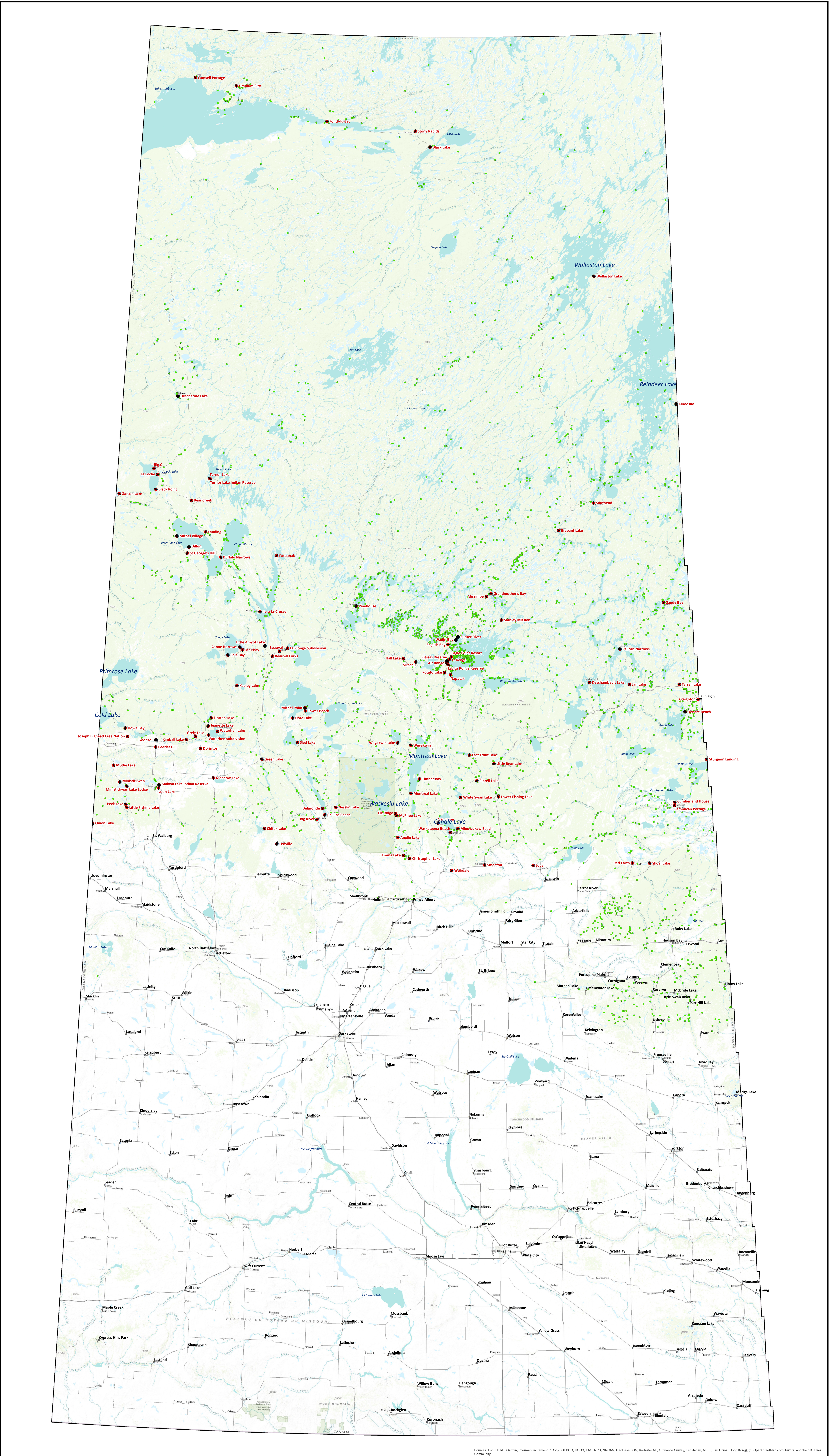


SPSA Protection Features & Areas

Wildfire Priorities

1. Human life
2. Communities
3. Major public and industrial infrastructure
4. Commercial timber
5. Structures, natural resources and commercial/industrial operations



Communities and Structural Features

- Northern Communities
- Southern Communities
- Remote Structures (e.g. homes, lodges, cabins)

