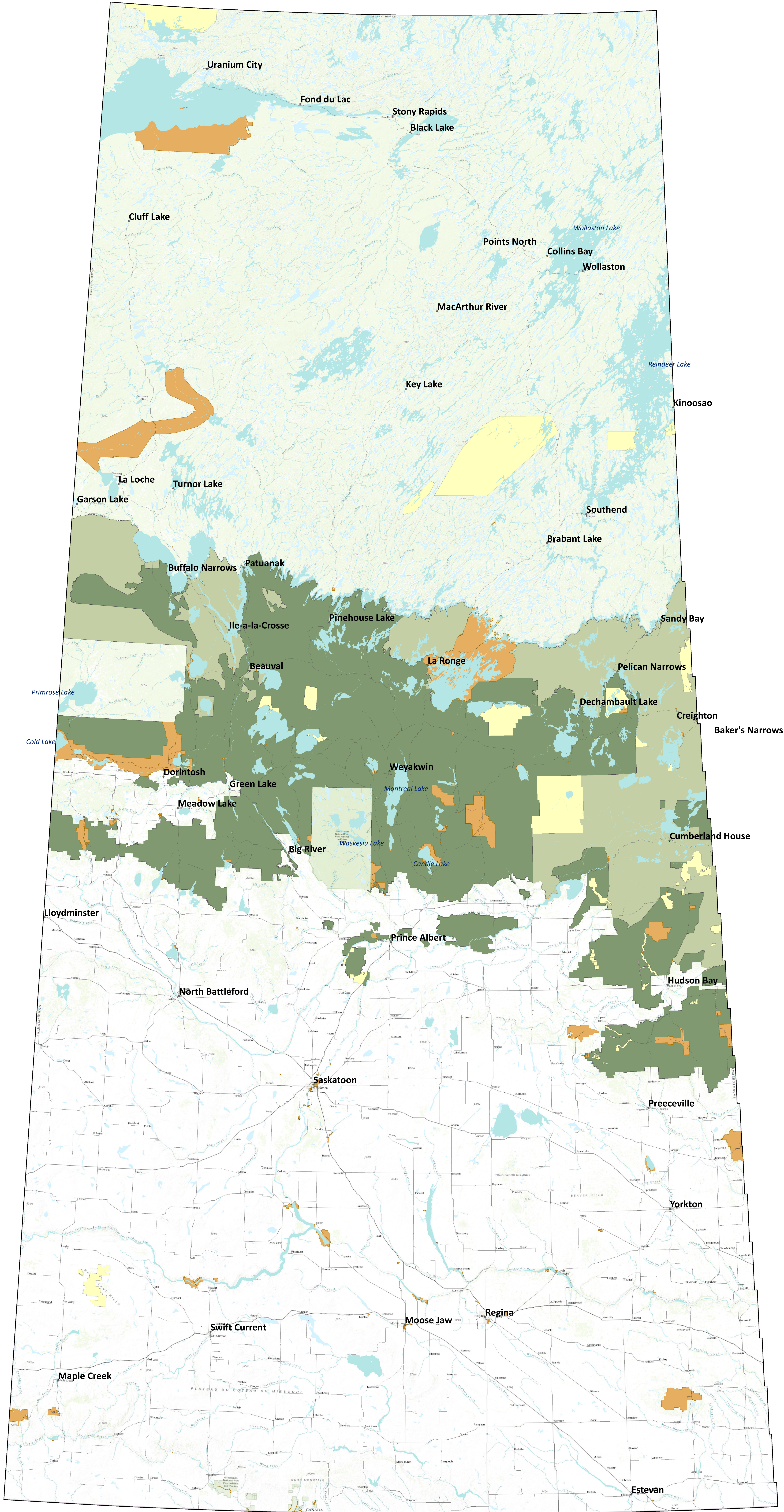


SPSA Protection Features & Areas

Wildfire Priorities

1. Human life
2. Communities
3. Major public and industrial infrastructure
4. Commercial timber
5. Structures, natural resources and commercial/industrial operations



Sources: Esri, HERE, Garmin, Intermap, increment P Corp., GEBCO, USGS, FAO, NPS, NRCAN, GeoBase, IGN, Kadaster NL, Ordnance Survey, Esri Japan, METI, Esri China (Hong Kong), (c) OpenStreetMap contributors, and the GIS User Community

Timber

- Primary Timber Area
- Secondary Timber Area
- Provincial Parks
- Ecological Areas

